



PCI Test Station

Expand your computer's PCI slot Capacity. Use PTS-7 expansion slots for fast and easy swapping of PCI cards you're testing – without powering down. Both expansion slots provide over-current protection.

PTS-7 is an external PCI slot expansion system. No driver changes are required - just connect the hardware cables. Two expansion slots are provided - each with over-current protection to protect both your PC and the PCI cards under test. PTS-7 supports hot swapping so you can change cards without switching computer power off. Included utility software provides the control functions needed for control of the PTS-7 slots – dc power and enable or disable of the test device Windows device driver. The utility also provides a methodology to link to a user test program. PCI card test throughput is up to 10 times faster than using your PC's main board PCI subsystem. PTS-7 applications include:

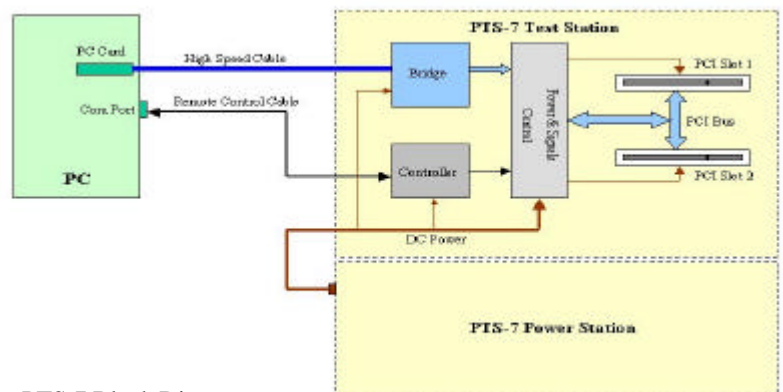
1. **Product Development**
2. **Production Test**
3. **School Experiments**
4. **Demonstrations & Exhibits**

PTS-7 PCI Test Station



Features

- ✍ **Two 32-bit 33MHz Expansion Slots**
- ✍ **Over-voltage and Over-current Protection**
- ✍ **Separate Power Supply**
- ✍ **User- replaceable Slot Assemblies**
- ✍ **Win98/2K/XP Control Software**
- ✍ **Hot Plugging**
- ✍ **Hot Swapping**
- ✍ **Same ID Mode as Internal PCI Bus**
- ✍ **One Button Test Mode**
- ✍ **Go / NoGo LED Indicator**
- ✍ **110V/220V AC Input (Auto Switch)**



PTS-7 Block Diagram

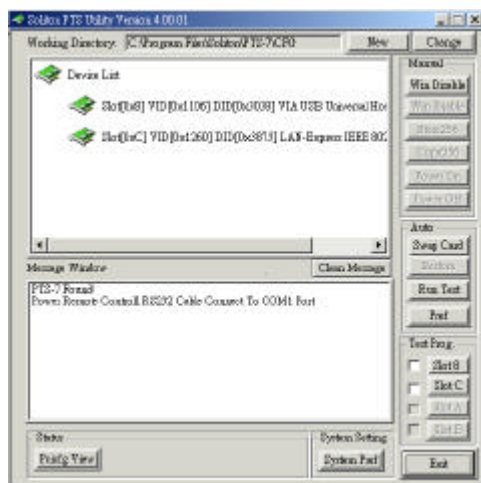
User - replaceable Slot Cards

Avoid troublesome main board PCI slot contact wear problems that arise after too many insertion cycles. The PTS-7 offers independent user-replaceable slot card subassemblies. Only four screws are removed.



Utility Software

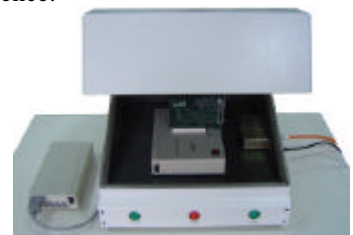
Using the included PTS-7 Utility Software, user's can turn dc power on and off. The Utility Software also provides user control for enabling or disabling unit-under-test Windows device drivers and linking to the user's test software.



Test And Measurement

The PTS-7 Test Station is an open frame design. The user can easily plug PC cards into the expansion slots. PTS-7 slots offer easy access for signal measurement and unit debug at engineering bring up and test. Excellent power monitoring circuits for all PCI voltages (+3.3V, +5V, +12V, -12V) protect both the PC and the unit-under-test. In the event of a short circuit, PTS-7 will automatically switch slot power off and turn the power LED indicator from red to green. For wireless PC card test use the optional shielding assembly to avoid interference.

Separated slot and power supply design helps meet RF test isolation requirements.



Specifications

- ✎ PCI Local Bus Specification V2.2
- ✎ Two 32-bit 33MHz slots
- ✎ Max 132MB Data Transfer Rate
- ✎ 25W/slot Over Voltage and Current Protection
- ✎ 200W Separate Power Supply
- ✎ 110V/220V AC Input (Auto Switch)
- ✎ DOS, Windows 98/2000/XP Support
- ✎ 600mm Standard High Speed Cable Length

Dimensions

- ✎ Test Station: 60 x 230 x 170 mm (H * W *L)
- ✎ Power Station: 53 x 226 x 120 mm (H * W *L)
- ✎ PC Card: 130 x 86 mm (W * H)
- ✎ High Speed Cable Length: 600 mm
- ✎ Control Cable Length: 600 mm
- ✎ Power Cable Length: 800 mm

Optional Accessories

1. 900mm High Speed Cable
2. Replacement Slot Card Assemblies
3. Mini-PCI Adaptor
4. 90 ° PCI Adaptor
5. RS-232 Communication cable
6. Shielding Assembly for Wireless Product Testing